



Professionalizing the Workforce to Address Addiction Worldwide

ISSUP 2019

Vienna, Austria

Becky Vaughn, Director



Fearless and ready to take on the challenge







World Drug Report 2017

[Topics](#)[Press](#)[Posters](#)[Previous reports](#)[UNODC](#)

To celebrate 20 years since its inception, the World Drug Report 2017 is presented in a new five-booklet format designed to improve reader friendliness while maintaining the wealth of information contained within.

[Booklet 1](#) summarizes the content of the four subsequent substantive booklets and presents policy implications drawn from their findings. [Booklet 2](#) deals with the supply, use and health consequences of drugs. [Booklet 3](#) focuses on the cultivation, production and consumption of the three plant-based drugs (cocaine, opiates and cannabis) and on the impact of new cannabis policies. [Booklet 4](#) provides an extended analysis of the global synthetic drugs market and contains the bulk of the analysis for the triennial global synthetic drugs assessment. Finally, [Booklet 5](#) contains a discussion on the nexus between the drug problem, organized crime, illicit financial flows, corruption and terrorism.



Interactive map



Executive summary



Drug demand and supply



Plant-based drugs



Synthetic drugs



The drug problem & organized crime.



Data

Education



Healthcare





Law Enforcement

Criminal Justice



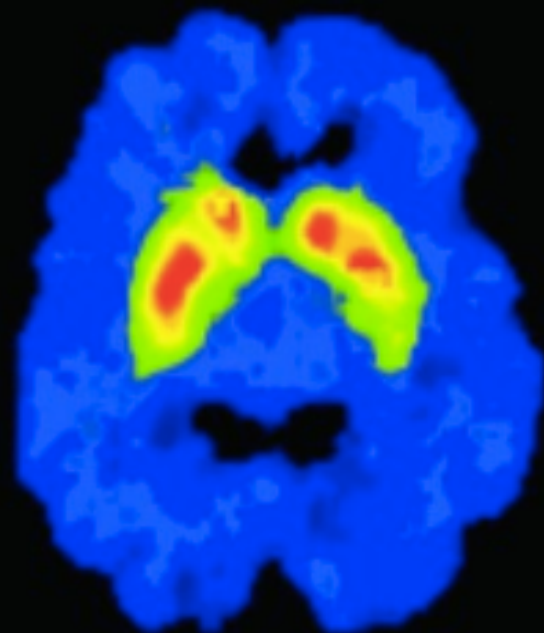
A silhouette of a child sitting on a reflective surface, possibly a pool of water, with a small toy duck nearby. The background is a warm, orange-hued wall. The text "Child Welfare" is overlaid in white.

Child Welfare

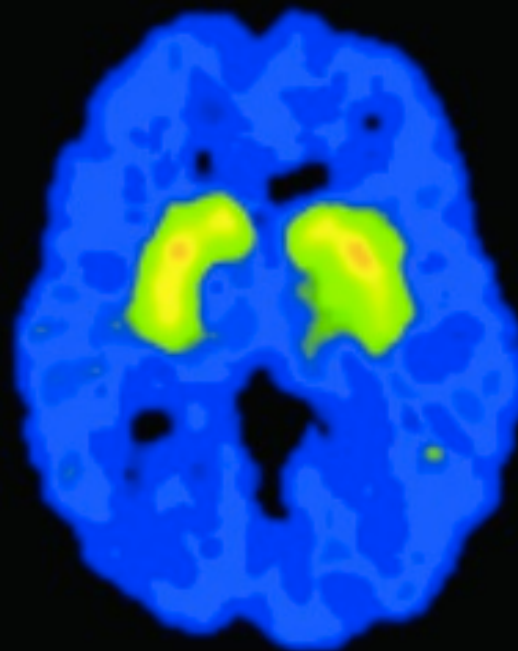


Workplace

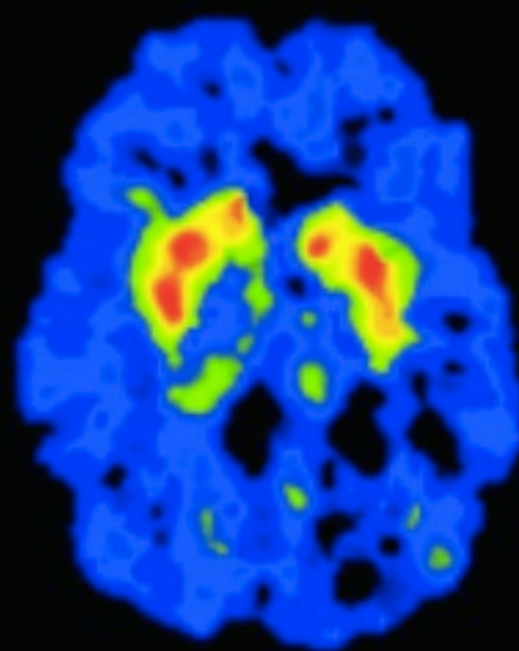
BRAIN RECOVERY WITH PROLONGED ABSTINENCE



Healthy Person



**METH Abuser
1 month abstinence**



**METH Abuser
14 months abstinence**



Demand Reduction

Preventing the uptake and/or delaying the onset of use of alcohol, tobacco and other drugs; reducing the misuse of alcohol, tobacco and other drugs in the community; and supporting people to recover from dependence through evidence-informed treatment.



Supply Reduction

Preventing, stopping, disrupting or otherwise reducing the production and supply of illegal drugs; and controlling, managing and/or regulating the availability of legal drugs.



Demand Reduction

Preventing the uptake and/or delaying the onset of use of alcohol, tobacco and other drugs; reducing the misuse of alcohol, tobacco and other drugs in the community; and supporting people to recover from dependence through evidence-informed treatment.



Supply Reduction

Preventing, stopping, disrupting or otherwise reducing the production and supply of illegal drugs; and controlling, managing and/or regulating the availability of legal drugs.



Harm Reduction

Reducing the adverse health, social and economic consequences of the use of drugs, for the user, their families and the wider community.

EFFICIENCY

is doing

THINGS RIGHT

EFFECTIVENESS

is doing the

RIGHT THINGS



Prevention
Promotion



Intervention
Treatment



Recovery
Support



Primary Care

Housing



Introduction to Prevention Science

Physiology and Pharmacology

Monitoring and Evaluation of
Interventions and Policies

Family-based Interventions

School-based Interventions

Workplace-based Interventions

Environment-based Interventions

Media-based Interventions

Community-based Implementation
Systems



Intervention
Treatment

Physiology and Pharmacology

Treatment for SUDs—The
Continuum of Care

Common Co-occurring Mental and
Medical Disorders

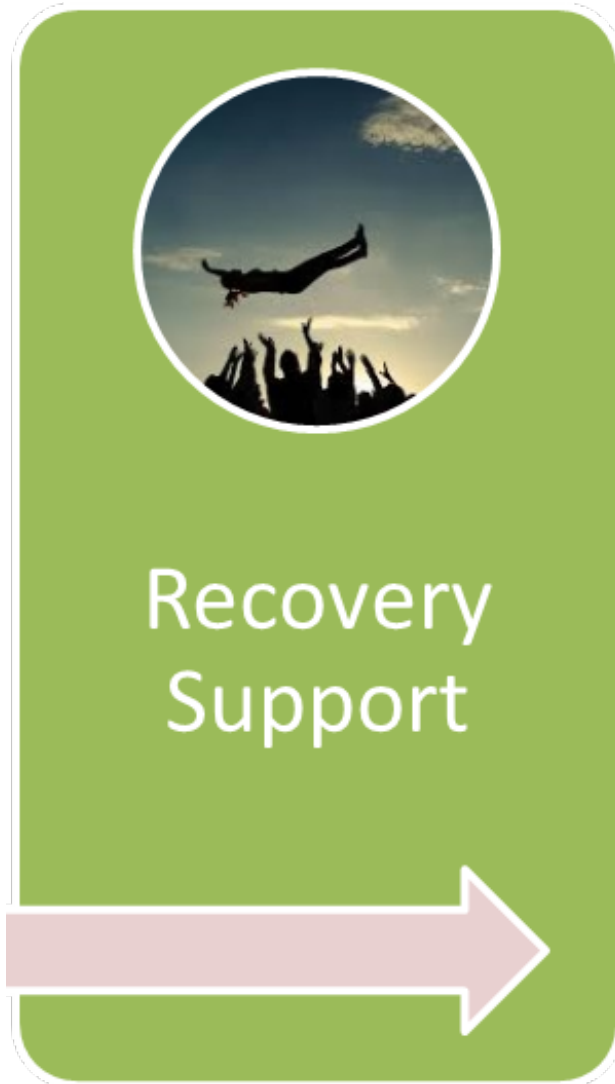
Basic Counselling Skills

Screening, Intake, Assessment,
Treatment Planning and
Documentation

Case Management

Crisis Intervention

Ethics



Introduction to the disease

Core functions

Core values

Recovery Support Skills

Broader support skills

Ethics, Risks, and Self Care

Science, public health, and
social factors

Defining success



Generalists Curriculum



Stigma

Cost of services

Lack of services

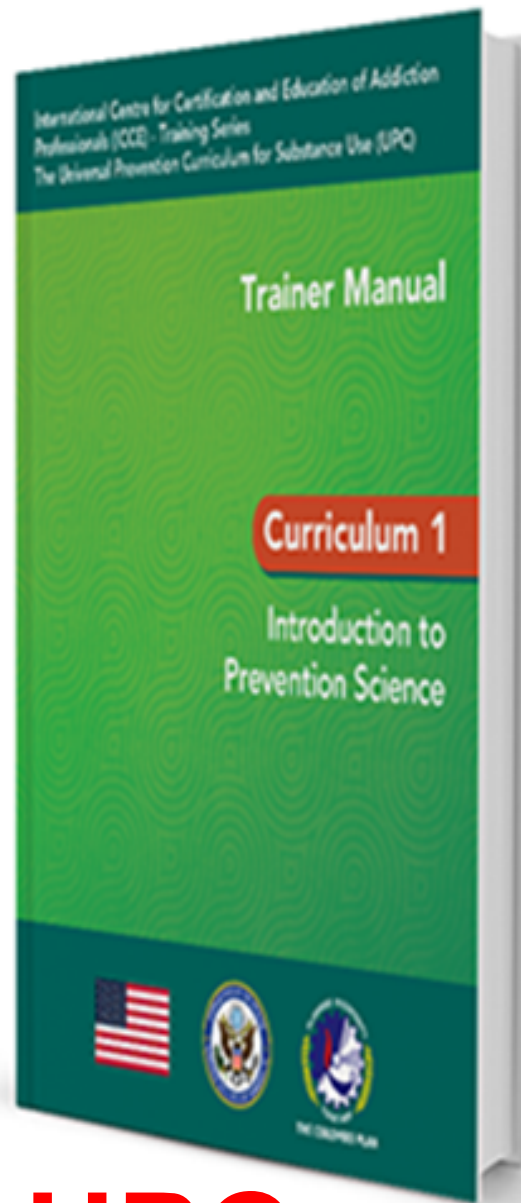
Workforce shortage


```
graph LR; A[Education Provider  
Gov't, University, NGO] --- B[Regional  
Coordinators]
```

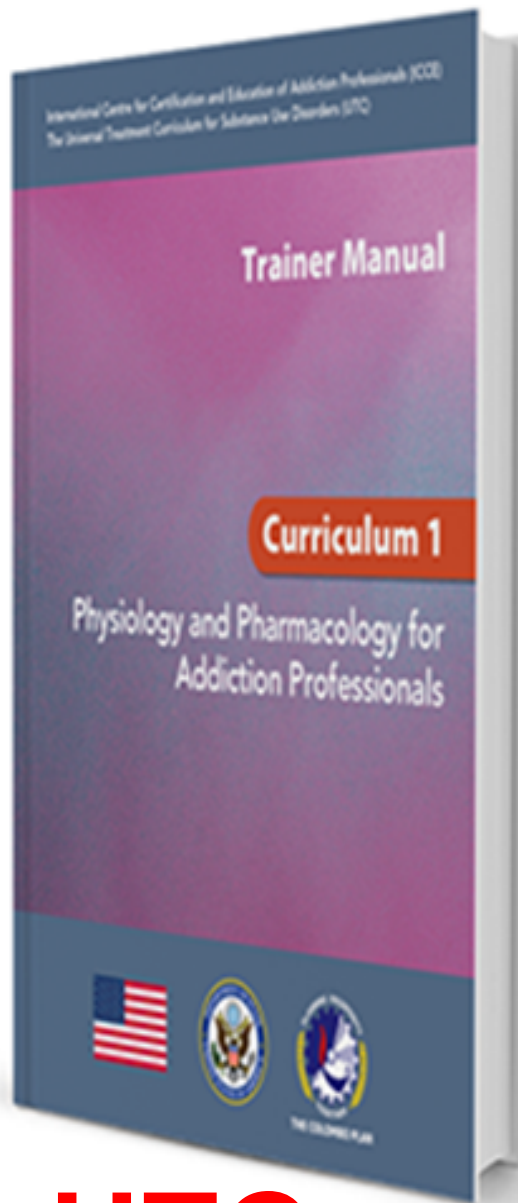
Education Provider
Gov't, University, NGO

Regional
Coordinators

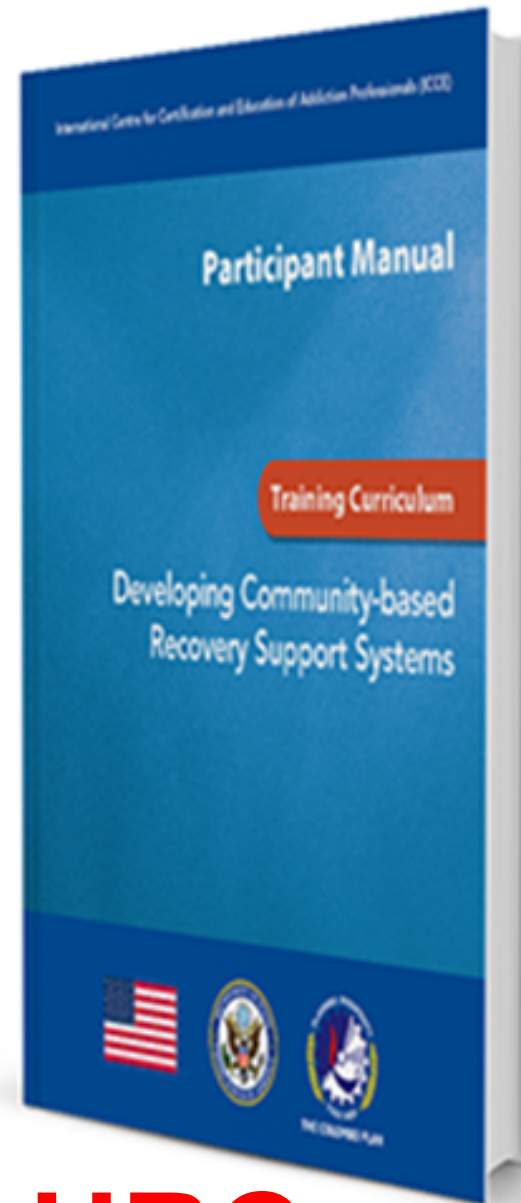




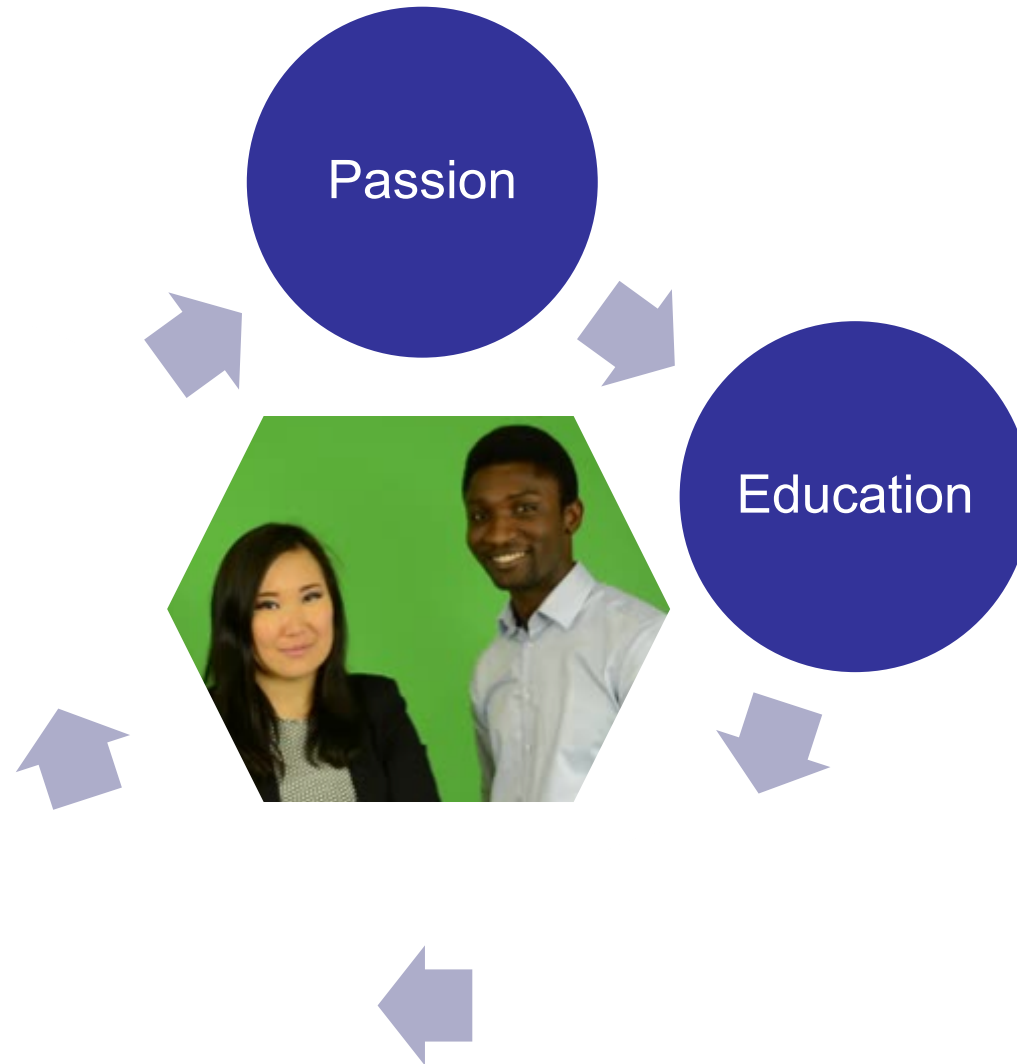
UPC

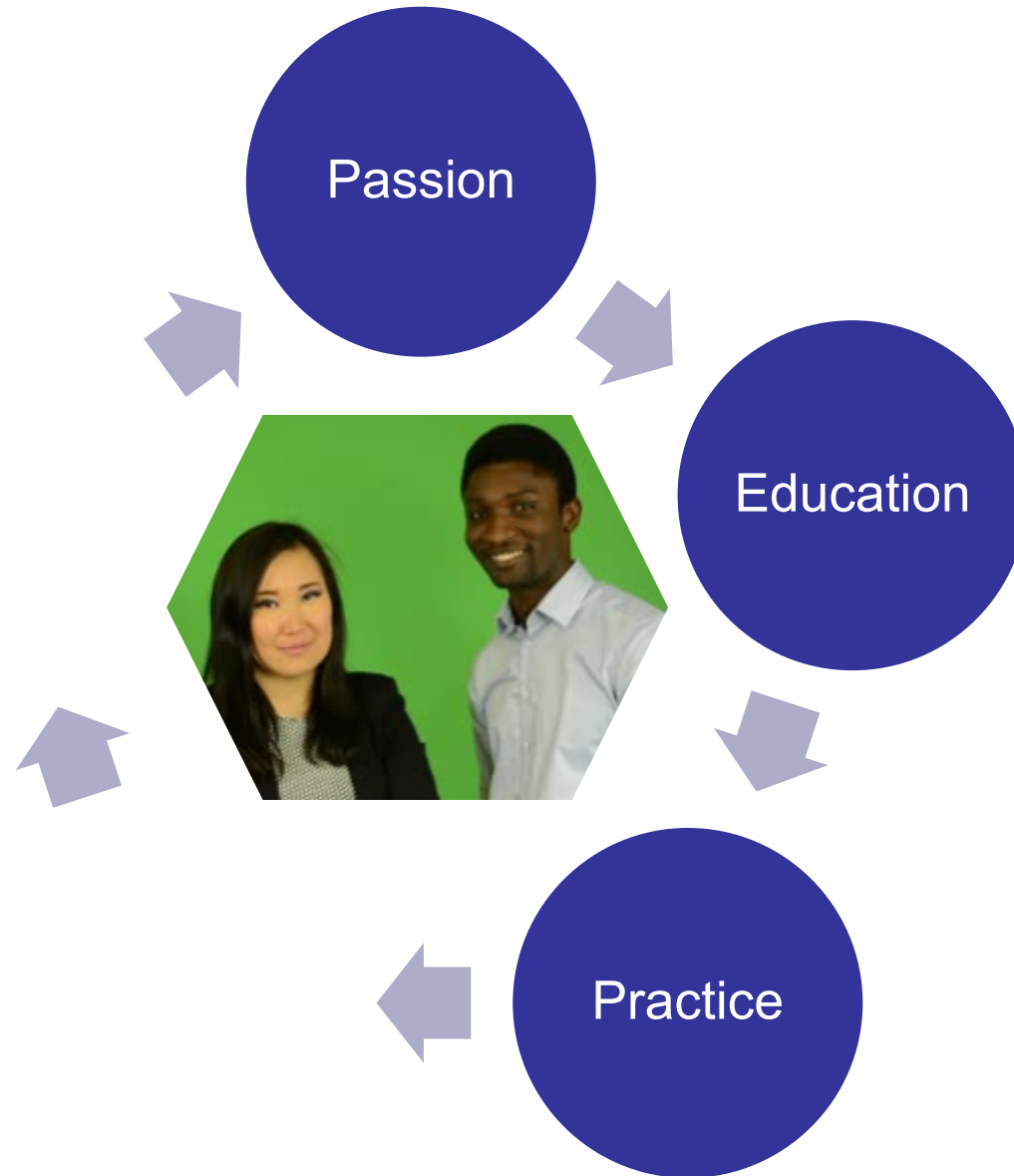


UTC

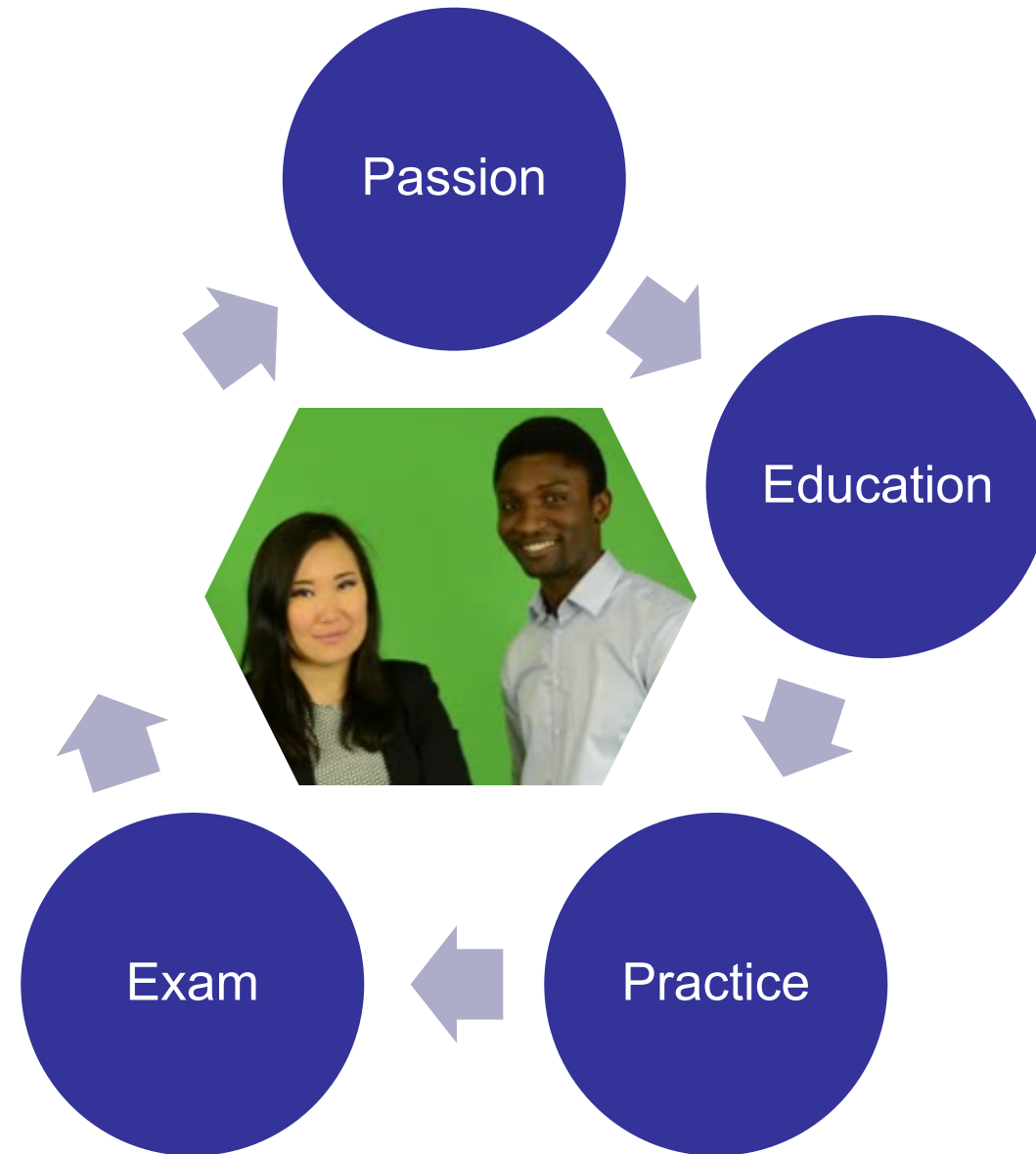


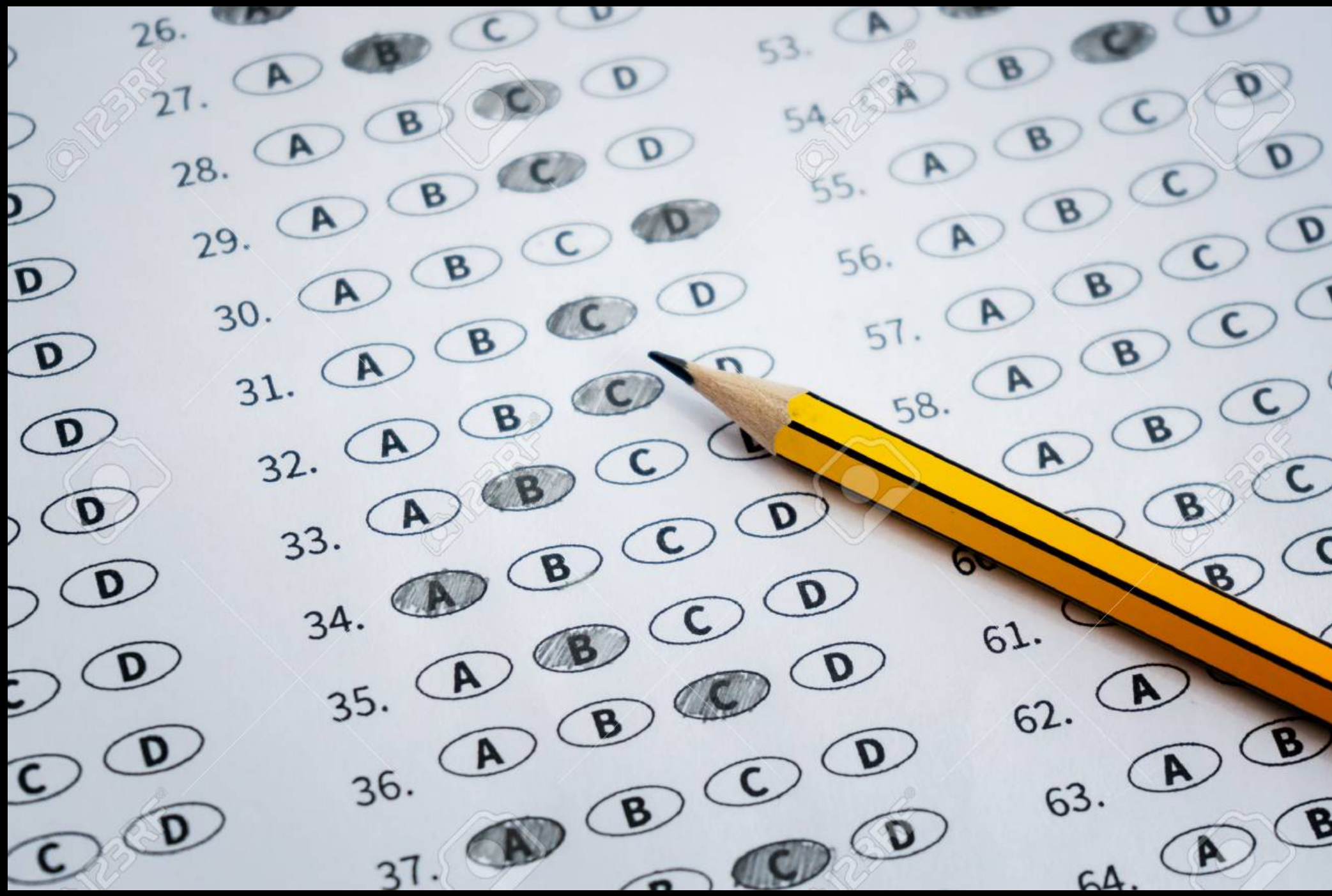
URC

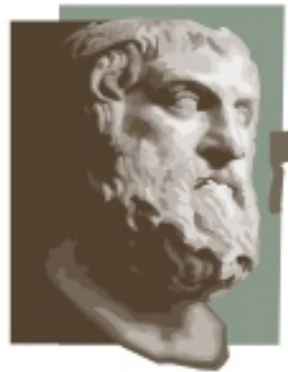










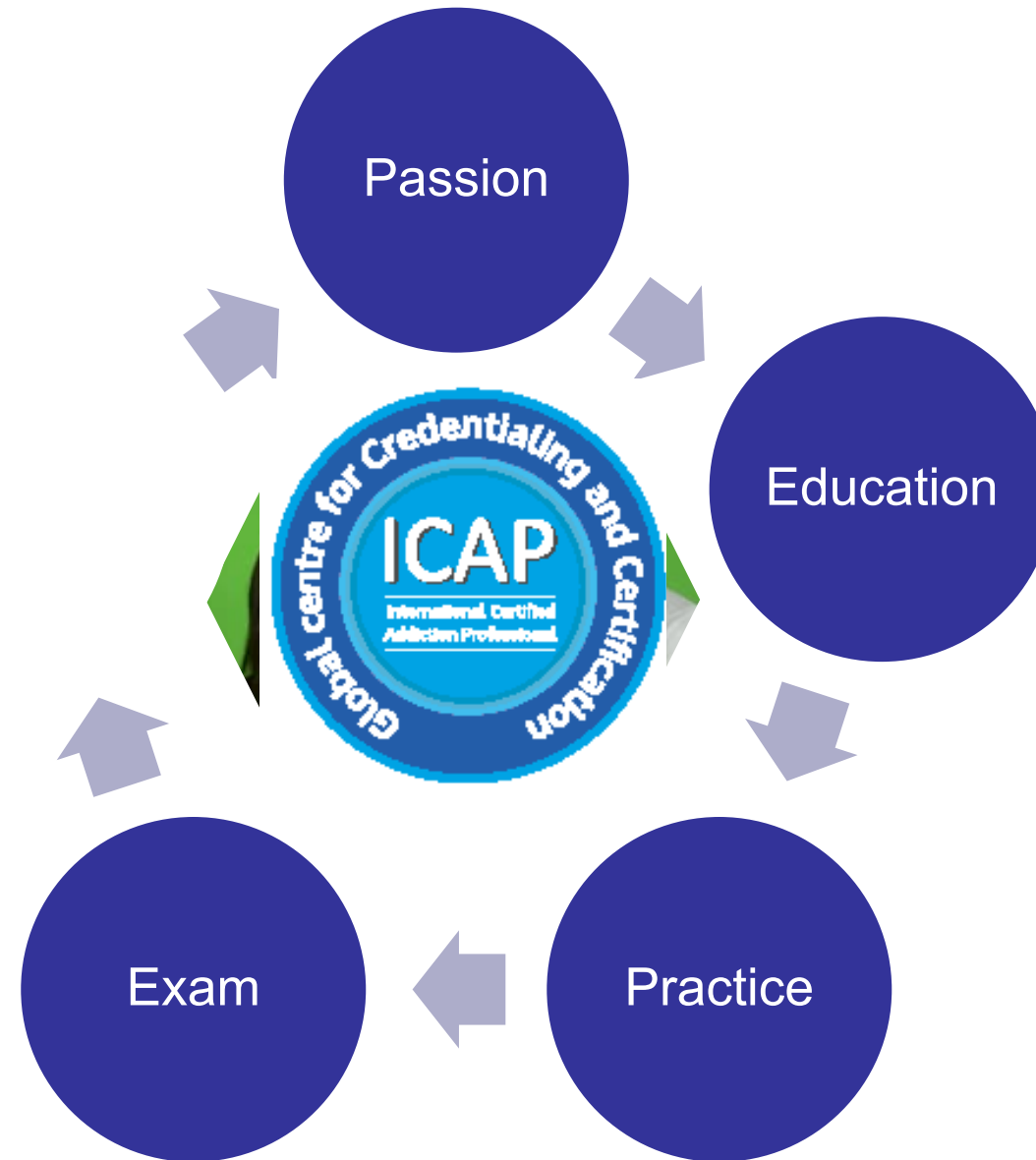


“First do no harm.”

Hippocratic Oath

Setting the Bar





Supervision



Confidentiality (Tx)

Professional Ethics

Continuing Education

Renewal





COLOMBO PLAN
ICCE
International Centre for Credentialing and
Education of Addiction Professionals

ISSUP

ICUDDR



COLOMBO PLAN
ICCE
International Centre for Credentialing and
Education of Addiction Professionals

ISSUP

**The International Consortium of
Universities for Drug Demand
Reduction (ICUDDR)**

1. Promote **Education and Training**,
2. Advance Applied Addictions-Related **Research**,
3. Prepare students for professional Credentialing,
4. **Support University Networking** and Coordination Worldwide
5. Facilitate Enhanced **Multidisciplinary Integration** in the Applied Addiction Fields.


The International Society of Substance Use Prevention and Treatment Professionals (ISSUP) is a global, not for profit, non-government organization to develop and support a **professional network**.

It also serves as a focal point for **training and credentialing opportunities** and other **information** about Prevention, Treatment, and Recovery Support.




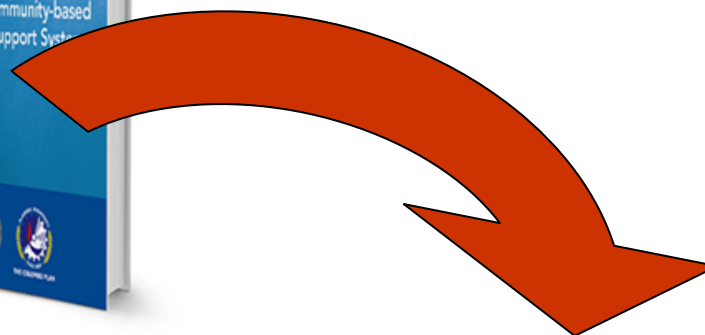
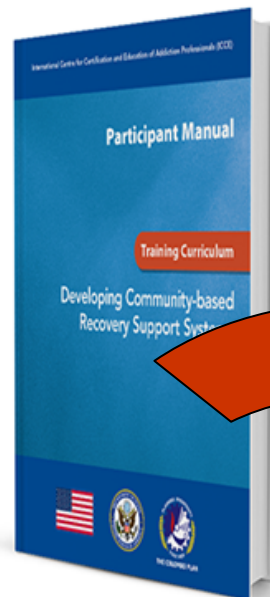
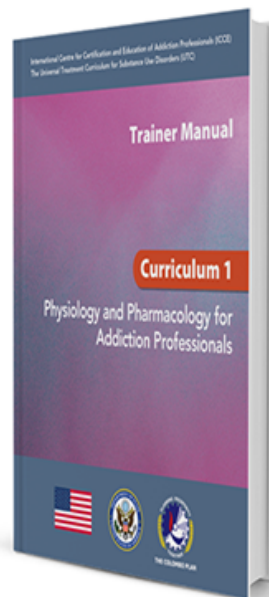
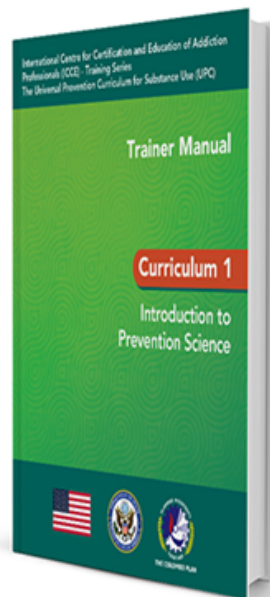
COLOMBO PLAN
ICCE
International Centre for Credentialing and
Education of Addiction Professionals

ICUDDR

A green rectangular highway sign with rounded corners, mounted on a metal lattice structure. The sign features the text "The Future" in a large, white, sans-serif font. Below it, in a smaller white font, is the text "NEXT EXIT" followed by a white arrow pointing diagonally upwards and to the right. The sign is set against a clear blue sky with a light yellow gradient at the bottom.

The Future

NEXT EXIT 





The Continuum of Care

for Addiction Professionals

Home → Dashboard

Customise this page

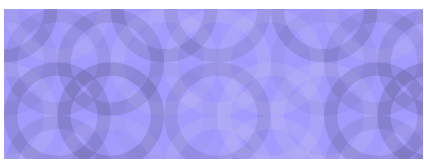
Navigation

- Home
- Dashboard**
- Site pages
- My courses
 - The Continuum of Care for Addiction Professionals

Course Overview

Timeline Courses

In progress Future Past



18%



Remote
Monitoring



Exams

2020

January						
Su	M	Tu	W	Th	F	Sa
			1	2	3	4
5	6	7	8	9	10	11
12	13	14	15	16	17	18
19	20	21	22	23	24	25
26	27	28	29	30	31	

February						
Su	M	Tu	W	Th	F	Sa
						1
2	3	4	5	6	7	8
9	10	11	12	13	14	15
16	17	18	19	20	21	22
23	24	25	26	27	28	29

March						
Su	M	Tu	W	Th	F	Sa
1	2	3	4	5	6	7
8	9	10	11	12	13	14
15	16	17	18	19	20	21
22	23	24	25	26	27	28
29	30	31				

April						
Su	M	Tu	W	Th	F	Sa
			1	2	3	4
5	6	7	8	9	10	11
12	13	14	15	16	17	18
19	20	21	22	23	24	25
26	27	28	29	30		

May						
Su	M	Tu	W	Th	F	Sa
					1	2
3	4	5	6	7	8	9
10	11	12	13	14	15	16
17	18	19	20	21	22	23
24	25	26	27	28	29	30
31						

June						
Su	M	Tu	W	Th	F	Sa
	1	2	3	4	5	6
7	8	9	10	11	12	13
14	15	16	17	18	19	20
21	22	23	24	25	26	27
28	29	30				

July						
Su	M	Tu	W	Th	F	Sa
			1	2	3	4
5	6	7	8	9	10	11
12	13	14	15	16	17	18
19	20	21	22	23	24	25
26	27	28	29	30	31	

August						
Su	M	Tu	W	Th	F	Sa
						1
2	3	4	5	6	7	8
9	10	11	12	13	14	15
16	17	18	19	20	21	22
23	24	25	26	27	28	29
30	31					

September						
Su	M	Tu	W	Th	F	Sa
		1	2	3	4	5
6	7	8	9	10	11	12
13	14	15	16	17	18	19
20	21	22	23	24	25	26
27	28	29	30			

October						
Su	M	Tu	W	Th	F	Sa
				1	2	3
4	5	6	7	8	9	10
11	12	13	14	15	16	17
18	19	20	21	22	23	24
25	26	27	28	29	30	31

November						
Su	M	Tu	W	Th	F	Sa
1	2	3	4	5	6	7
8	9	10	11	12	13	14
15	16	17	18	19	20	21
22	23	24	25	26	27	28
29	30					

December						
Su	M	Tu	W	Th	F	Sa
		1	2	3	4	5
6	7	8	9	10	11	12
13	14	15	16	17	18	19
20	21	22	23	24	25	26
27	28	29	30	31		



WE HAVE A
**STRATEGIC
PLAN**

IT'S CALLED
**★ DOING ★
THINGS.**

-HERB KELLEHER



TO DO:

1. *Sched*
2. *Sche* *m*
3. *Join ISSUP*



GOAL SETTING

S

SPECIFIC

M

MEASURABLE

A

ATTAINABLE

R

RELEVANT

T

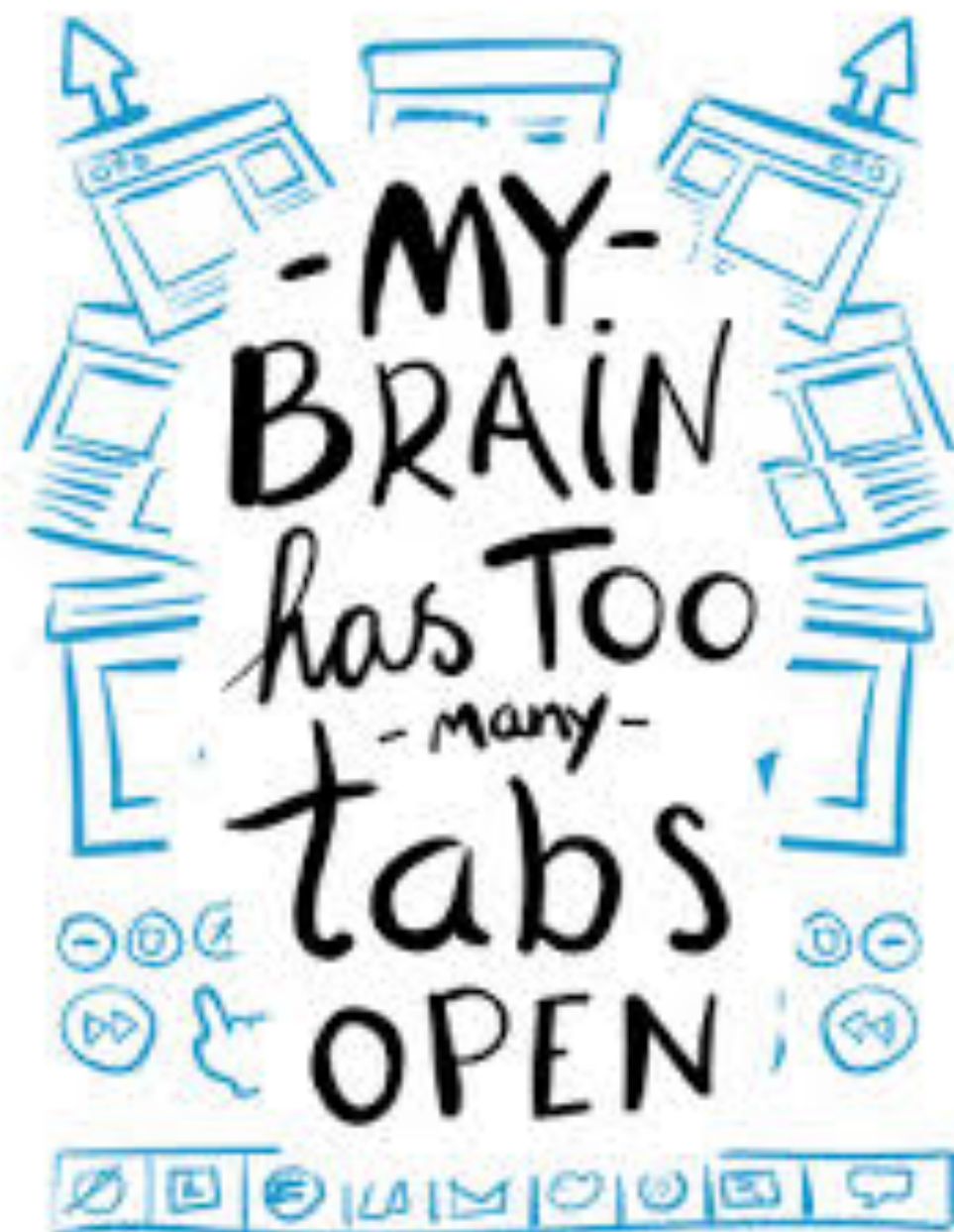
TIME-BOUND

Wasn't sure which stick you threw,



So I got 'em all,

And the
ball





STAY STRONG!



Becky Vaughn

Becky.Vaughn@
colomboplan.com