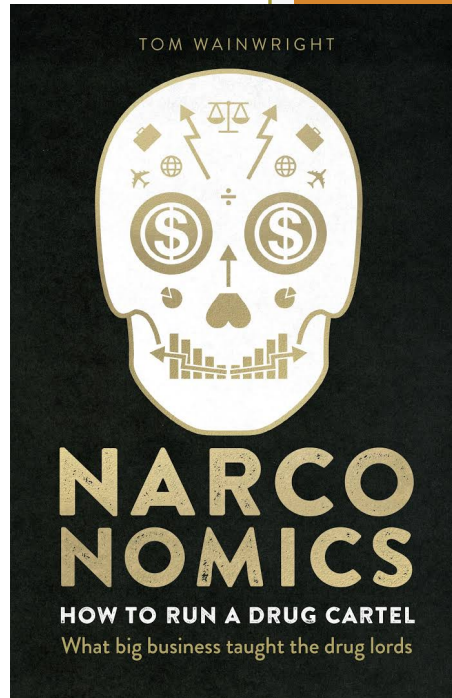




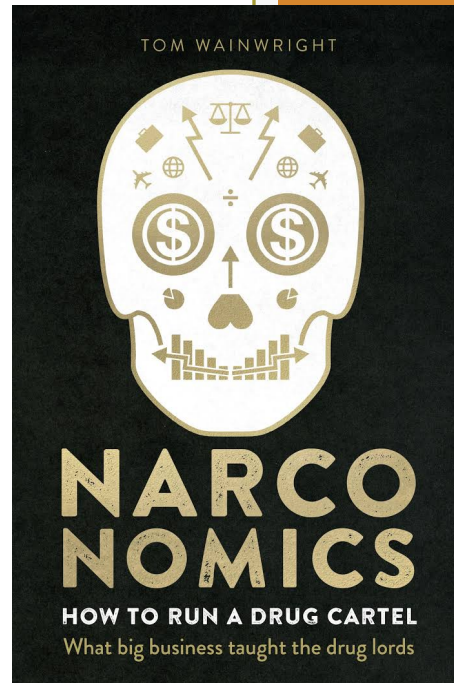
July 2019, Vienna

WHY THERAPEUTIC COMMUNITIES ARE RELEVANT TODAY

Phaedon Kaloterakis




Browsing through the “drugs paraphernalia” section of Evolution Marketplace, I find glass pipes for smoking crystal meth (“Made in the USA!!!! Completely lead and additive free unlike the crap you get from the Chinese”) and an electrical bag-resealer (which the manufacturer shows being used to seal a stash of marijuana inside an opened bag of Cheetos).



Perhaps
strangest of all, one vendor is hawking sachets of “synthetic clean urine,” aimed at people who need help passing a drug test. For true realism, the vendor, CleanU, also sells an accessory called the ScreenyWeeny, “the world’s best fake penis, with Push&Piss technology.” The Weeny comes in five colors, from NordicWhite to LatinoBrown. Reviews are generally positive.

- Drug dependence should be regarded as **preventable and treatable disease**



Drug dependence is considered a multi-factorial health disorder that **often** follows the course of a relapsing and remitting chronic disease. Unfortunately in many societies drug dependence is still not recognized as a health problem and many people suffering from it are stigmatized and have no access to treatment and rehabilitation. Over recent years, the **biopsychosocial** model has recognized drug dependence as a multifaceted problem requiring the expertise of many disciplines. A health sciences multidisciplinary approach can be applied to research, prevention and treatment.

(Source: UNODC 2009)

The Declaration of Mallorca, 2016

Therapeutic Communities require interdisciplinary professional teams, including experts by experience, to deal with the complexity of addiction within **a bio-psychosocial framework.**



WHAT IS A THERAPEUTIC COMMUNITY?

A Therapeutic Community is a treatment facility in which the community itself, through self-help and mutual support, is the principal means for promoting personal change.

The Origins of the Therapeutic Community

The British Model

Educational/Social work

Mental Health

Boy's Republic
Little Commonwealth
Hawkspur Experiment
Summerhill School
Order of Woodcraft Chivalry

Northfield Military
Neurosis Centre

Belmont Industrial
Neurosis Unit

Henderson Hospital

The American Model

Self-help Groups

Oxford Group Movement
AA
Synanon
Daytop
Phoenix House

First International Conference of Therapeutic Communities
Norrkoping, Sweden 1975



NIA VARDALOS JOHN CORBETT LAINE KAZAN
MICHAEL CONSTANTINE ANDREA MARTIN JOEY FATONE

MY BIG FAT GREEK WEDDING

HOCHZEIT AUF GRIZCHISCH

Eine
perfekte
Liebe...
wäre da nicht
die Familie.

GOLD CIRCLE FILMS PRESENTS IN ZUSAMMENARBEIT MIT HOME BOX OFFICE UND MPM ENTERTAINMENT EINER PLAYTONE FILM "MY BIG FAT GREEK WEDDING"
NIA VARDALOS JOHN CORBETT LAINE KAZAN MICHAEL CONSTANTINE GIA CARIDES LOUIS MANDYLOR MIT ANDREA MARTIN UND JOEY FATONE
DIREKTOR DER FOTON: CHRIS WILSON UND ALEXANDER JAWKO REGIE: MICHAEL CLANCY MUSIK VON NIA GOLDMAN, A.C.E. PRODUZENT: GREGORY KEEN LIEFERTE: JEFFREY JUR
HERAUSGABER: NORM WALTZ PAUL BROOKS STEVEN SHARSHIAN PRODUZENT: NITA WILSON TOM HANKS GARY GOETZMAN
DISTRIBUTION: NIA VARDALOS REGIE: JOEL ZWICK
www.mybigfatgreekwedding.de





όλον

σύνθεσις

θεραπεία



whole

synthesis

therapy

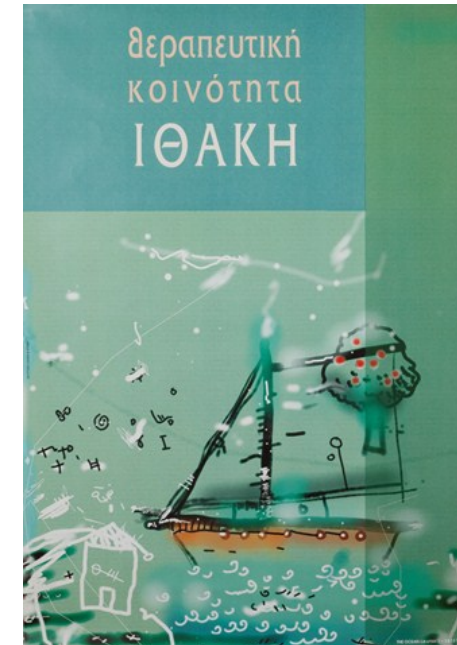
THERAPEUTIC community

An example : KETHEA



(Therapy Centre for Dependent Individuals)

- established in 1983 in Thessaloniki (ITHACA TC)
- the network : 120 units nationwide



THERAPEUTIC community

Highlights of KETHEA's wholistic approach

- ❖ prevention department
- ❖ research department
- ❖ education department (schooling, vocational training, staff training, expert training in cooperation with UCSD, publications)
- ❖ prison work
- ❖ harm reduction
- ❖ different populations (adolescents, mothers with children, refugees, immigrants)
- ❖ national telephone helpline 1145
- ❖ alcohol, gambling, internet
- ❖ legal support
- ❖ health care
- ❖ activities (sports, arts)



THERAPEUTIC community

KETHEA's INTERNATIONAL AFFILIATIONS

Member of the European Federation of Therapeutic Communities /EFTC (1984)

Member of the World Federation of Therapeutic Communities/ WFTC (1984)

Member of the International Federation of Non-Governmental Organizations /IFNGO (1994)

Member of the International Council on Alcohol and Addiction /ICAA (1996)

Member of the Radar International Prevention Network/ RADAR (1998)

Associated with the Department of Public Information (DPI) of the UN (1999)

Special Consultant to the Economic and Social Council (ECOSOC) of the UN (2001)

Member of the European Family Therapy Association/ EFTA (2001)

Member of the Vienna NGO Committee/ VNGOC (2010)

idiot

the word "idiot" comes from
the Greek ἰδιώτης, idiōtēs 'a private
person, individual', 'a private citizen'

THERAPEUTIC community

Outcomes from a follow-up study (NSPH)

- evaluation of clients who received TC treatment, 5 years after their admission
- quantitative and qualitative data collection by face to face interview
- instrument : ASI (follow -up version)
- duration of field work : April 2000 – May 2001
- sample definition : 551 out 766 clients who entered treatment between January 1994 and December 1995 (72%)

THERAPEUTIC community

Target Sample	551	100.0%
Located	483	87.7%
Interviews Completed	388	70.4%
Refused	27	4.9%
Deceased	37	6.7%
Broken appointments	14	2.5%
Not accessible	17	3.0%
Not located	68	12.3%

Response rate 77.1%

THERAPEUTIC community

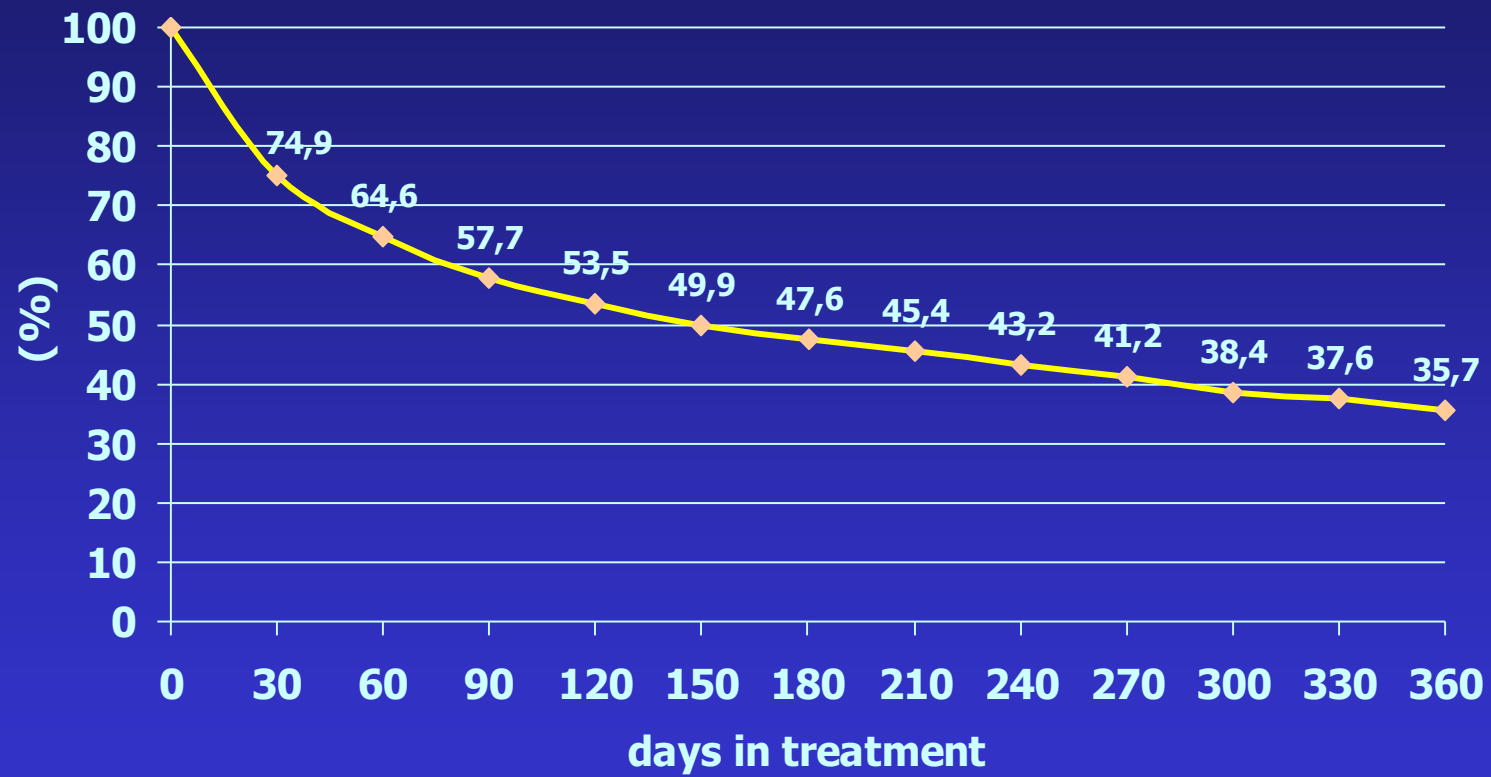
Response rate review

	Overall	Outpatient Adults	Outpatient Adolescence	Residential Adults
SAMSHA, SROS (2001)*	68.0%	67.0%		66.0%
Sells, DARP (1974)*	76.0%			
DATOS (1997)*	71.3%			
DATOS-A (2001)*	75.7%			
Hubbard et al, TOPS (1989)**	71.0%			
Gossop et al, NTORS (1999)**	70.1%			70.1%
NSPH Greece (2002)	77.1%	85.4%	77.7%	74.7%

* Prospective design 5 years follow up

THERAPEUTIC community

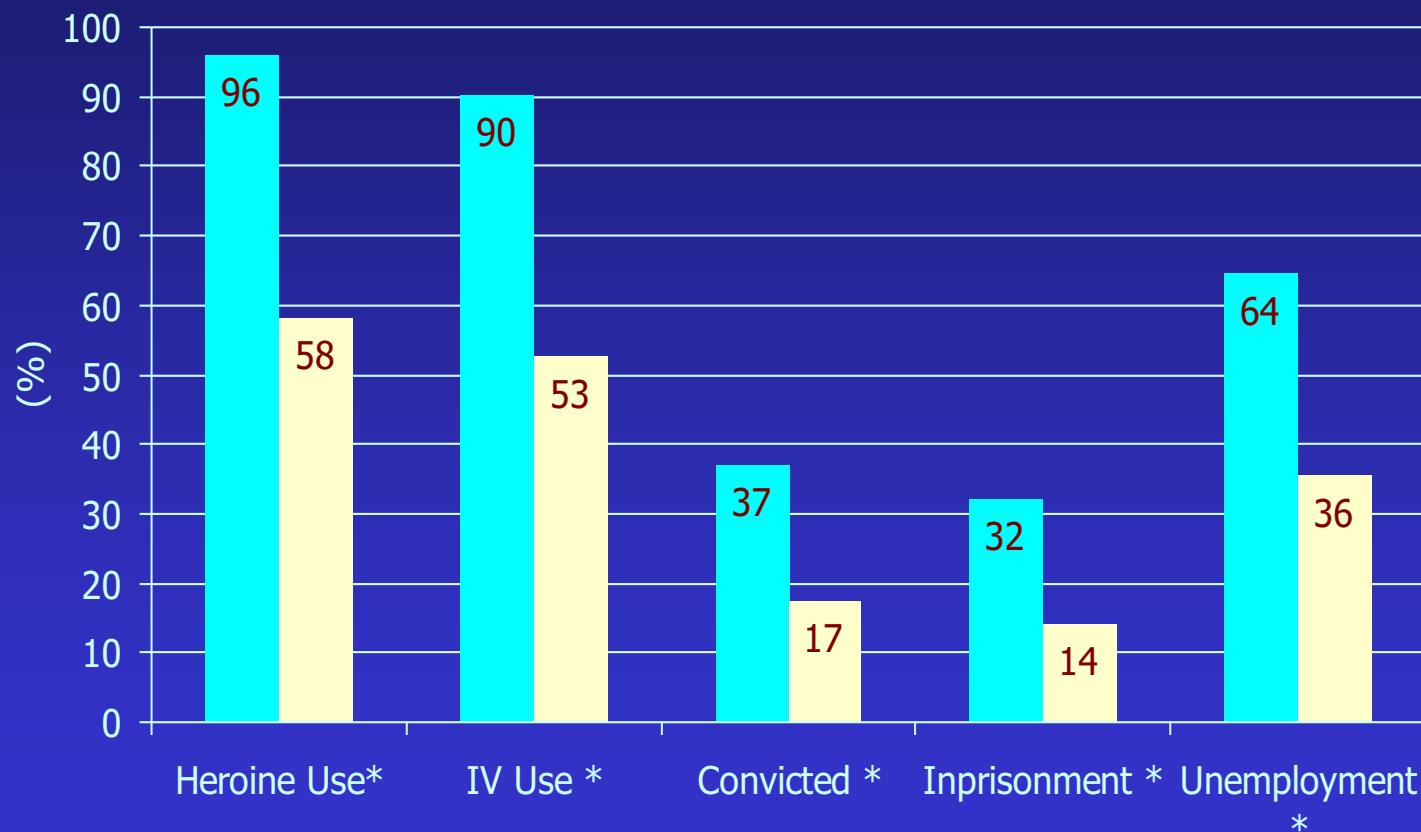
Time in treatment (n= 388)



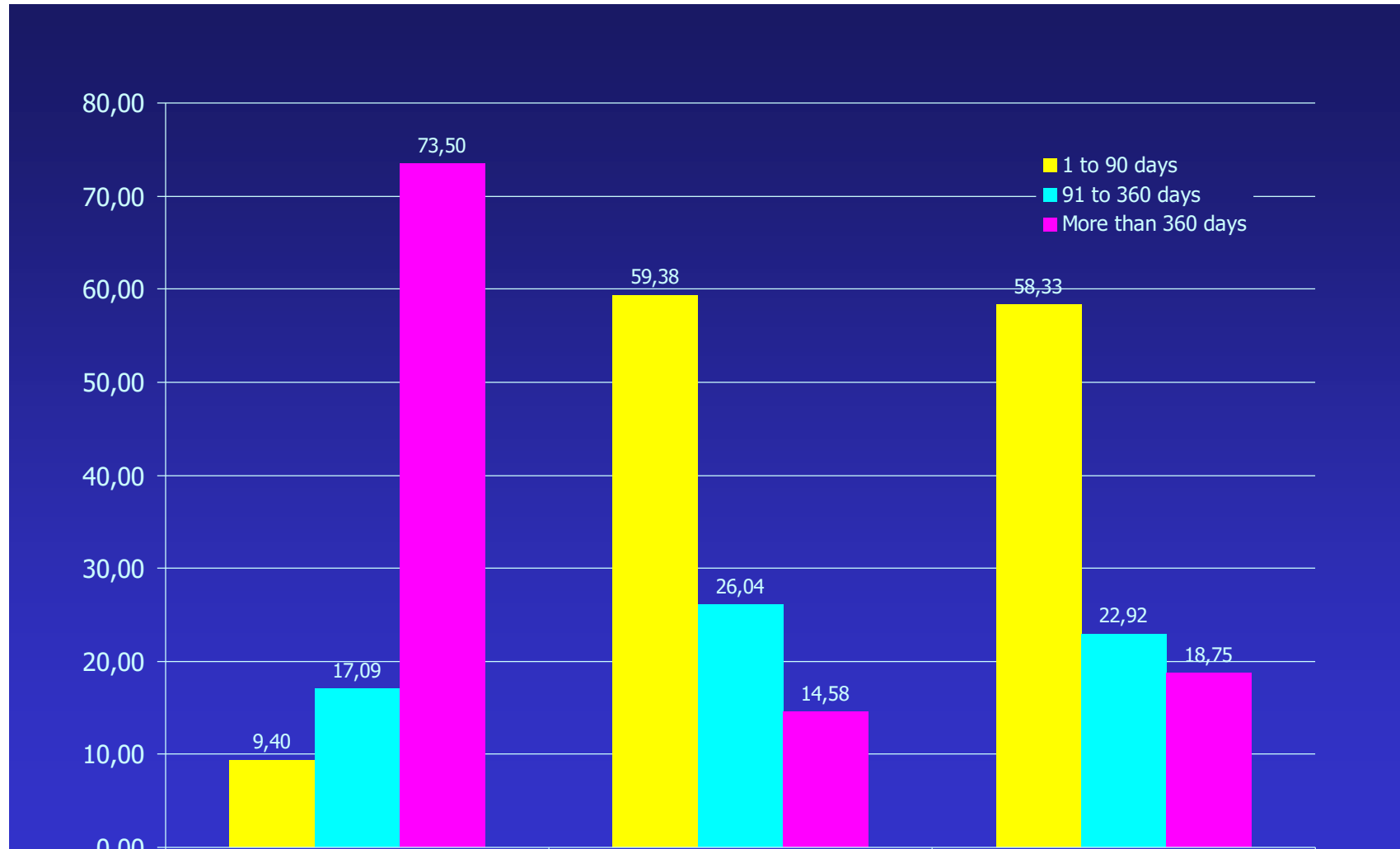
THERAPEUTIC community

Basic changes

* Significance 99% ($\alpha=0.01$)



THERAPEUTIC community



therapeutic COMMUNITY



therapeutic COMMUNITY



therapeutic COMMUNITY

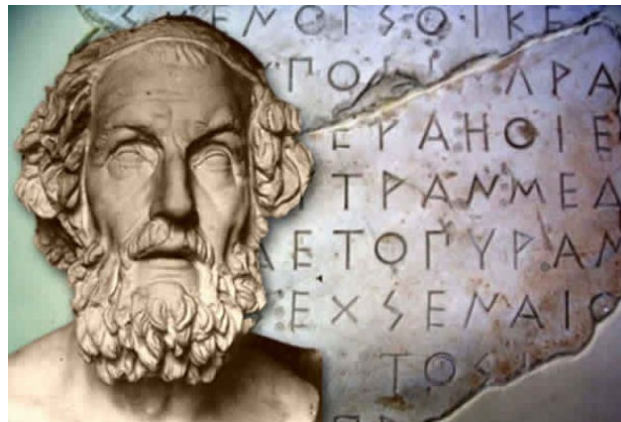


therapeutic COMMUNITY



the word “therapy” has its roots in Homer

a therapist (θεράπων) was the servant of a warrior who used to take care of the warrior’s weapons and was helping him to wear his armor



Opioid Epidemic and the Therapeutic Community Model

Editors: Jonathan Avery, Kristopher A. Kast



17th EFTC Conference

Everything flows

19-20 September 2019, Thessaloniki, Greece



EFTC

KEOEA



6elpix



ευχαριστώ
thank you

phaedon.kal@ketheathess.gr

